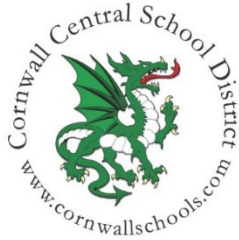


CORNWALL CENTRAL SCHOOL DISTRICT



REQUEST FOR BIDS: AUDITORIUM SOUND SYSTEM CORNWALL CENTRAL HIGH SCHOOL

RFB: 2025-3

Issued:

Friday, February 7, 2025

Submission Deadline:

February 28, 2025 at 11:00am

**Cornwall Central School District
24 Idlewild Avenue
Cornwall-on-Hudson, NY 12520
Attention: Business Office**

I. OVERVIEW

The Cornwall Central School District (hereafter “the District”) is seeking bids for an auditorium Sound System at Cornwall Central High School. The specifications included herein, as well as the awarded bidder’s proposal, will represent the Agreement between the District and the vendor.

To be considered, John P. Fink, Assistant Superintendent for Business, must receive a proposal by **11:00 A.M.** on February 28, 2025.

DESCRIPTION OF THE SCHOOL DISTRICT

The District provides educational services from kindergarten through the twelfth grade. The District, located in Orange County in the State of New York, is approximately 60 miles north of New York City. The District has a student population of approximately 3,100. The District has three elementary schools, one middle school and one high school. The District has approximately 500 full and part-time employees. The District is governed by nine Board of Education members. The Central Administration is comprised of the Superintendent of Schools, Assistant Superintendent for Business, Assistant Superintendent for Curriculum and Instruction, Director of Pupil Personnel Services, Director of Buildings and Grounds, Director of Human Resources, Director of Food Services, Director of Guidance, Director of Health and Safety, and Athletic Director. The High School has a principal and two assistant principals. The Middle School has a principal and two assistant principals. Each of the elementary schools has a principal, with one also having an assistant principal.

SCOPE / SPECIFICATIONS OF SERVICES

This specification is broken out into 4 (FOUR) separate options as follows:

BASE - SOUND SYSTEM (INCL. ASSISTIVE LISTENING SYSTEM)

ALT A - NETWORK INFRASTRUCTURE & REMOTE SYSTEMS INTEGRATION

ALT B - WIRELESS THEATRICAL MICROPHONES

ALT C - WIRELESS INTERCOM + PORTABLE GEAR

The owner requires breakout costs for each of these options.

Furthermore, 2 (TWO) costs breakouts for each of the 4 options may need to be required if the owner decides to purchase individually as follows:

ONE – THE PRIME ELECTRICAL CONTRACTOR

TWO – THE SOUND SYSTEM SUB-CONTRACTOR

As a rough guide, elements of this specification are meant to assist an electrical contractor understand their specific scope-of-work.

PART 1 – GENERAL

1.01 GENERAL SCOPE OF WORK

- A. Furnish and install a professional, performance grade, multi-zone sound system, with loudspeakers and associated electronics housed in existing equipment racks. Portable equipment as specified herein to be furnished and turned over to the Owner.
- B. System to be capable of providing sound reinforcement of dynamic musical and vocal sources along with interfacing with other audio/video systems, ancillary equipment and potential broadcast feeds. The sound system shall consistently provide intelligible and dynamic sound reinforcement of voice and music throughout the listening areas as intended. Sound shall be free of audible distortion or any undesired audio artifacts.

- C. The sound system installation shall be furnished and installed by a licensed Electrical Contractor with assistance from a sub-contracted professional Sound System Contractor. Both contractors shall be highly experienced in the installation and commissioning of professional performance sound systems.
- D. The Sound System (Sub) Contractor shall provide all equipment as listed herein and as required for a fully functional system along with direction and guidance to the Electrical Contractor for their installation scope-of-work. The Sound System Contractor shall also provide all head-end terminations, system setup, final loudspeaker aiming, digital signal processor and wireless microphone programming, comprehensive system testing, calibration and user training.
- E. The Electrical (Prime) Contractor shall furnish and install all field wiring. The Electrical Contractor shall furnish and/or configure existing power to the amplifier rack as needed. The Electrical Contractor shall install all field devices (i.e.: loudspeakers) as furnished by the Sound System Contractor. The Electrical Contractor shall furnish and install all infrastructure and additional materials as needed (i.e.: conduit, raceways, mounting hardware, etc.). Additional materials to include any/all associated hardware, accessories, cabling, connectors and/or equipment as required or as needed for optimum performance and functionality at no additional cost to the Owner.
- F. The installation shall be coordinated with all other trades on-site. Exact locations and methods shall be field determined by the Electrical Contractor and Sound System Contractor to achieve optimum results per specifications and associated drawings. All wiring is to be protected per the NEC.
- G. Removal and turnover of any existing components and wiring deemed not useable per the Sound System Contractor and/or Owner shall be included in the Electrical Contractor's scope-of-work. Existing conduits, raceways and wiring may be re-used if found to be in good working condition and compliant with all NEC guidelines.
- H. **IMPORTANT NOTES: THIS IS A "FAST-TRACK" PROJECT. WORK SHIFTS MAY INCLUDE OVERTIME AND/OR AFTER-HOURS TO MEET THIS SCHEDULE AT NO ADDITIONAL COST TO THE OWNER.**

ALL WORK IS SUBJECT TO NYS DOL LAWS INCLUDING PREVAILING WAGE RATES AND REQUIREMENTS.

1.02 DETAILED SCOPE OF WORK

- A. Remove and turnover all existing loudspeakers and associated mounting hardware. Patch and paint as needed.
- B. Remove and turnover all existing electronic equipment in the sound booth. Re-use existing under-counter slide-out equipment racks for new equipment as specified.
- C. Remove and turnover all existing electronic equipment from the existing amplifier rack in the storage closet with the exception of the Telex intercom master station. Also, re-use the existing floor standing equipment rack and associated power.
- D. Furnish and install two loudspeaker line arrays with associated wiring, hardware, amplification and networked digital processing per this specification and associated drawings.
- E. Furnish and install ceiling suspended loudspeakers and associated wiring, amplification and processing above the pit for stage monitoring ("foldback") and above the two rear seating areas.

- F. Furnish and/or configure power at existing amplifier rack in closet to add one 30amp circuit on a 30amp NEMA outlet.
- G. Furnish and install a “simple-use” system with a remote controlled, digital mixer that accommodates includes FOURTEEN total inputs plus FOUR outputs as follows:
1. TWO handheld wireless microphone systems
 2. ONE headset wireless microphone system
 3. ONE lavalier wireless microphone system
 4. SIX microphone jack plates (*4 at stage apron, 2 behind proscenium, 2 upstage*)
 5. ONE line level stereo audio jack plate (*at stage apron*)
 6. ONE line level stereo audio jack plate (*in booth*)
 7. Left/Right outputs to MAIN loudspeakers and program outputs
 8. ONE permanently installed “foldback” monitor (MON 1) *ceiling mounted above pit*
 9. SIX portable monitor (MON 2) plates (*2 at apron, 2 behind proscenium, 2 upstage*)

Note: Single gang boxes for all wall plates listed above are EXISTING with wiring that may either be re-used or utilized as pulls for new/appropriate wire per associated drawings.

- H. Furnish and install a new “advanced-use” digital mixing system with input/output accessories and network capability per this specification and associated drawings.
- I. Include system presets to choose one of two operating modes; 1 for the “simple-use” system and 2 for the “advanced-use” system. Also include mute control of rear seating loudspeakers. Furnish and install a simple remote control (decora on 1-gang wall plate) and associated wiring in the booth.
- J. Include rechargeable battery packs and desktop charging docks for FOUR wireless microphone systems utilized for “simple-use”.
- K. Furnish and install a remote, key’d power switch (decora on 1-gang wall plate) and associated wiring in the booth that shall simultaneously power up/down the closet rack mounted electronics and amplifier.
- L. Furnish and install one hanging microphone system above the pit dedicated for program output feeds (i.e.: recording, assistive listening, intercom, overflow, broadcast, etc.). Install 1-gang wall plate on ceiling and associated wiring to the booth.
- M. Furnish and install Allen & Heath Dante audio (Primary & Secondary) digital snake interfaces along with network connections for use with TWO portable I/O boxes and ONE remote fader controller. Interfaces shall be shielded CAT6A connections included on wall plates on extra-deep 2-gang wall boxes in FOUR locations as follows:
1. In booth
 2. behind stage left proscenium wall
 3. in Orchestra room
 4. in Chorus room (also extendable to Band room)

TWO CAT6A STP (braided shield) wires plus TWO CAT6+ (unshielded) wires shall be furnished and installed from each remote location to the equipment rack in the closet. All exact locations to be field verified with Owner.

- N. Furnish and install one audio wire from the closet equipment rack to the cafeteria equipment rack. Integrate program audio for use as overflow space.

O. **As part of ALT A - NETWORK INFRASTRUCTURE & REMOTE SYSTEMS INTEGRATION**, furnish and install additional network infrastructure for Owner provided video and network connections (FOUR per each location = TWENTY-EIGHT total). Interfaces shall be shielded CAT6A connections included on wall plates on extra-deep 2-gang wall boxes in SEVEN locations as follows:

1. in booth
2. behind stage right proscenium wall
3. behind stage left proscenium wall
4. in Orchestra room
5. in Chorus room
6. in Band room
7. in Cafeteria

FOUR CAT6+ FTP (foil shield) wires shall be furnished and installed from each remote location to the equipment rack in the closet. All exact locations to be field verified with Owner.

P. **As part of ALT A - NETWORK INFRASTRUCTURE & REMOTE SYSTEMS INTEGRATION**, furnish and install one audio wire from the booth rack to the cafeteria sound system rack.

Q. **As part of ALT B - WIRELESS THEATRICAL MICROPHONES**, furnish and install TWENTY-EIGHT wireless microphone systems for theatrical and musical use per these specification and associated drawings. Include rechargeable battery packs and rack mounted charging trays. Furnish and install antenna and power distribution as needed for all 28 channels of wireless microphone systems.

R. Utilize existing wireless microphone antennas above the booth.

S. **As part of ALT B – WIRELESS THEATRICAL MICROPHONES and ALT C – WIRELESS INTERCOM & PRODUCTION GEAR**, add various microphones and portable equipment as specified. Portable equipment shall include microphones, cables, adapters, stands, cases and other accessories as listed in the attached Bill-Of-Materials.

T. Furnish and install an ADA compliant Assistive Listening System.

U. **IMPORTANT NOTES: THE FULL INTENT OF THIS SPECIFICATION AND THE ASSOCIATED DRAWINGS SHALL APPLY REGARDLESS OF FIELD CONDITIONS FOUND TO THE CONTRARY. POTENTIAL BIDDERS ARE ENCOURAGED TO MAKE ARRANGEMNTS FOR A SITE VISIT AND REACH OUT WITH ANY REQUESTS FOR INFORMATION. ABOVE ALL, THE CONTRACT AWARDED CONTRACTOR MAY EXPECT A SIGNIFICANT AMOUNT OF “FIELD ENGINEERING” TO FULL COMPLY WITH THIS SPECIFICATION AND THE ASSOCIATED DRAWINGS.**

1.03 REFERENCE STANDARDS

A. All equipment, installation methods and system commissioning to comply with the latest applicable requirements and standards of the National Electrical Code (NEC), the Electronics Industries Association (EIA), the Federal Communications Commission (FCC), the Audio Engineering Society (AES) and Avixa (InfoComm).

1.04 PERFORMANCE & FUNCTIONALITY SPECIFICATIONS

A. The sound system shall be designed and installed to produce a clear and undistorted SPL of 100dB throughout the full bandwidth between 500Hz and 5kHz without exceeding or being below 3dB of the reference level at all frequencies throughout the primary listening areas. The sound system shall be designed and installed to produce a clear and undistorted SPL of 100dB throughout the full bandwidth between 100Hz and 8kHz without exceeding or being below 6dB of the reference level at all frequencies throughout the nearest sitting areas. The loudspeakers shall be designed and positioned to provide a minimum amount of acoustical interaction with non-listening areas.

- B. Processing and control of all inputs and outputs shall be controlled utilizing networked, CPU based, digital signal processors (DSP's). The DSP's shall be custom configured (routing, gain structure, equalization, compression, limiting, time alignment, feedback reduction filters, etc.) and programmed by the Sound System Contractor to provide optimum fidelity and to insure system protection from excessive volume. Precise adjustments shall be made utilizing advanced acoustical analysis tools such as SIA SmaartLive software and calibrated testing hardware.
- C. Each of the FOURTEEN inputs allocated for the "simple-use" system shall be controlled by a remote volume control system per this specification and the associated drawings. Each of the microphone and music signals shall be programmed within the digital signal processor for optimum performance, gain-before-feedback and maximum allowable volume.
- D. All loudspeakers shall be mechanically secured (i.e.: no lag bolts) to load rated structural members. Additional blocking and/or strut backing may be required. Secondary safety assemblies may also be required per the associated PS drawings and to ensure a third, load rated attachment. All mounting hardware (including safety assemblies) shall be load rated for a working load limit (WLL) based on a minimum safety ratio of 5:1 (5x breaking strength).
- E. The system shall be configured to accept an audio paging or mass notification signal (Provided-By-Others) and automatically override any local input (i.e.: emergency notification interface). The systems shall also be capable of accepting a contact closure from another system (i.e.: fire alarm) to mute all local inputs. Implementation of any of these features will be pre-programmed and will not incur additional cost on behalf of the Sound System Contractor.

1.05 SOUND SYSTEM CONTRACTOR QUALIFICATION

- A. The sound system equipment shall be furnished by and installed under the direction of a qualified professional Sound System Contractor experienced in the installation, testing and adjustment of sound systems similar to the systems specified herein.
- B. Said Sound System Contractor should have been a certified member of at least THREE of the following professional audio organizations:
 - Audio Engineering Association (AES)
 - AVIXA (formerly known as InfoComm)
 - National Academy of Recording Arts & Sciences (NARAS)
 - National Systems Contractor Association (NSCA)
- C. Sound System Contractor should have received factory authorized training for analog and digital audio signal processing and/or sound system engineering from at least THREE of the following professional audio equipment manufacturers: *Ashly, Allen & Heath, Avid, Community, MediaMatrix, Midas, QSC, Shure*
- D. Sound System Contractor shall employ a team of personnel highly trained and experienced in the fields of audio engineering and professional event production. The team leader should have at least 15 (FIFTEEN) years of experience as a professional audio engineer (BOTH systems design and installation PLUS live event, broadcast and studio production) and should have earned a CTS (Certified Technology Specialist) certification from AVIXA aka InfoComm or equal.
- E. Safety in the workplace is the highest priority. All contracted personnel at the work site shall be regularly trained and certified for safe work practices. At a minimum, each worker should possess an OSHA 10 card.
- F. Said Sound System Contractor may be required to provide references from previous customers and authorization from equipment manufacturers.
- G. Acceptable Sound System Contractors may include, but not limited to:

1.06 WARRANTY & SERVICE

- A. The Sound System Contractor will include a statement of warranty on the entire system and on the individual pieces of equipment. The equipment warranty period of ONE year shall begin upon delivery of all materials on-site. The labor warranty period of TWO years shall begin on the date of system acceptance by the Owner. This warranty shall obligate the Sound System Contractor to provide equipment, material, and labor if required, at no charge to the Owner, during the warranty period, in the event of system or equipment malfunction due to defect.
- B. Non-warranty service shall be subject to pricing, terms and conditions by the Sound System Contractor.
- C. Sound System Contractor is to maintain a dedicated service representative and point of contact for future support, and maintain an inventory of spare parts capable of providing future service for a period of up to FIVE years after system acceptance.
- D. Response for warranty service and/or operational assistance shall be within 48 hours of receiving such service call and will be provided during normal working hours Monday - Friday.

1.07 SUBMITTALS & CLOSE OUT DOCUMENTATION

The Sound System Contractor shall provide electronic copies of the following submittals:

- A. Product Data: Manufacturer's descriptive literature for each device or piece of equipment, indicating compliance with specified requirements.
- B. Shop Drawings: A functional block diagram with wire labels, clearly indicating all devices, equipment, etc. "As-Built" drawings accounting for any system configuration changes, if such exist, as approved shall also be provided at time of system acceptance.
- C. Operations / Maintenance Manual (Users Guides): Manufacturer's operational manuals for each device or piece of equipment requiring manual operation.
- D. Statement of Guarantee and Warranty: Contractor's letter of completion, including equipment warranty (minimum one year) and labor guarantee (minimum two years) dates.
- E. Copies of any/all DSP (digital signal processor) files and passwords.

PART 2 – PRODUCTS

2.01 EQUIPMENT

- A. Equipment listed herein is not intended to be restricted to specific manufacturers but provide a technical feature set, performance specifications and build quality on which the entire systems design is based. Each manufacturer and model listed has been carefully chosen based on technical performance requirements, specific feature sets, quality of manufacturing, and overall subjective experience with the success of such equipment in previous system installations. **All performance equivalent substitutions must be authorized by the Owner, Architect or Electrical Engineer prior to system purchase and installation.** The equipment list may also not include all materials required to provide a fully functional system. The Contractors are responsible for providing ALL materials needed for a complete system as intended.
- B. Acceptable manufacturers may include:

- Adaptive Technologies, Community and Fehr Bros. for rigging hardware
- Allen & Heath, Ashly Audio and Biamp for digital signal processors
- FrameWorks, K&M, and Atlas-Soundolier for microphone hardware
- Community, Fulcrum, RCF and QSC Audio for loudspeakers
- Middle Atlantic Products, Furman Sound and Surge-Ex for power distribution
- Listen Technologies, Telex and Williams AV for assistive listening systems
- Middle Atlantic Products, Gator and Lowell for racks and hardware
- QSC Audio, Ashly Audio, RCF and LabGruppen for amplifiers
- Shure, Sennheiser and Earthworks for microphones and accessories
- Tascam, Denon and Radio Design Labs for CD players and Bluetooth receivers
- Midas, Allen&Heath, Ashly Audio, LabGruppen and Denon for mixers
- ClearCom, HME and Williams AV for wired and wireless intercom
- Whirlwind, Neutrik and Canare for portable wiring and accessories
- Sony, Eiki and Vivitek for projectors
- Atlona, Aurora and Extron for A/V transport, switching & control

C. Bill Of Materials:

BASE - SOUND SYSTEM (INCL. ASSISTIVE LISTENING SYSTEM)

LINE	QTY	MODEL / PART #	DESCRIPTION
1	1	AP11334	Allen & Heath dust cover
2	2	DT-168	Allen & Heath DANTE I/O interface
3	1	M-SQ-SDANTE64-A	Allen & Heath DANTE CARD
4	1	SQ-7	Allen & Heath 48 input digital mixing console
5	1	FR-16	Ashly remote volume control
6	1	NE24.24MT-16X4	Ashly 16x4 digital matrix mixer/processor
7	1	NE8800M	Ashly 8x8 digital signal processor
8	1	neWR5	Ashly wall mount remote control
9	1	nXp8004	Ashly 4x 800w networkable amplifier w/ DSP
10	2	IC6-2082/26HF-W	Community loudspeaker (rear fills)
11	1	IP8-1122/26HF-W	Community loudspeaker (foldback)
12	1	IUB1122/W	Community u-bracket
13	2	IUB2082/W	Community u-bracket
14	1	P30/C-B	Earthworks high definition hanging microphone
15	1	LA-122	Listen assistive listening remote antenna kit w/ cable
16	3	LA-304	Listen assistive listening signage
17	1	LA-326	Listen assistive listening rack kit
18	2	LA-380-01	Listen assistive listening charging case
19	18	LA-405	Listen assistive listening earphones
20	6	LA-430	Listen assistive listening induction neckloop
21	24	LR-4200-216	Listen assistive listening rechargeable receiver

22	1	LT-800-216	Listen assistive listening transmitter
23	1	D3	Middle Atlantic storage drawer
24	4	EB1	Middle Atlantic solid blank panel
25	2	EVT1	Middle Atlantic vented blank panel
26	2	HP	Middle Atlantic rack screws
27	1	K-DEC	Middle Atlantic remote switch for sequential power distro
28	1	PD-915R	Middle Atlantic 15amp power distro
29	1	PDS-620R	Middle Atlantic sequential 20amp power distro
30	1	RPS-KEY	Middle Atlantic remote switch keys
31	1	U2V	Middle Atlantic slotted rack shelf
32	1	GS116PP	NetGear 16 port POE gigabit switch
33	2	MS308E	NetGear 8 port multi-gigabit switch
34	2	FB-HDL6	RCF line array fly bar
35	2	FLYBAR PICKUP HDL6	RCF additional line array shackle
36	4	HL-35S	RCF active line array subwoofer
37	12	HL-6	RCF passivel ine array loudspeaker
38	2	LINKBAR-HDL6/12	RCF line array link bar
39	1	XPS16K	RCF 4x 4,000w networkable amplifier w/ DSP
40	4	CP-1B	RDL 1-gang decora cover
41	2	D-CIJ3D	RDL stereo line input jack
42	1	TX-70A	RDL passive transformer
43	4	SB900B	Shure rechargeable battery pack
44	1	SBC-200	Shure charging dock w/ power supply
45	1	SBC-200-US	Shure charging dock w/ power supply
46	1	SM35-TQG	Shure headset microphone
47	1	TL47T/O-MTQG	Shure lavalier microphone
48	2	ULXD1D-H50	Shure 2x digital wireless bodypack transmitter
49	2	ULXD2D/SM58-H50	Shure 2x digital wireless handheld mic/transmitter
50	1	ULXD4Q-H50	Shure 4x digital wireless receiver
51	3	ENC-S025	Whirlwind portable shielded Ethercon cable
52	10	NL4-001.5	Whirlwind / Neutrik SPEAKON jumper cable
53	2	NL4-003	Whirlwind / Neutrik SPEAKON jumper cable
54	12	NL4-FX	Whirlwind / Neutrik SPEAKON connector
55	1	SPC82	Whirlwind 8x16 mic level splitter
56	1	SPC82L	Whirlwind 8x16 line level splitter
57	1	WPX1B/1FD-MIC 5 (HL)	Whirlwind 1x mic input plate plate (1-gang)
58	1	WPX1B/1FD-MIC 6 (HR)	Whirlwind 1x mic input plate plate (1-gang)

59	1	WPX1B/1FD-MIC 7 (DSR)	Whirlwind 1x mic input plate plate (1-gang)
60	1	WPX1B/1FD-MIC 8 (DSL)	Whirlwind 1x mic input plate plate (1-gang)
61	1	WPX1B/1FD-MIC 9 (USR)	Whirlwind 1x mic input plate plate (1-gang)
62	1	WPX1B/1FD-MIC 10 (USL)	Whirlwind 1x mic input plate plate (1-gang)
63	1	WPX1B/1FD-OH MIC	Whirlwind 1x mic input plate plate (1-gang)
64	6	WPX1B/1MD-MON 2	Whirlwind 1x monitr output plate plate (1-gang)
65	5	WPX2B/4ECON - Dante P, Dante S, Network, Network	Whirlwind 4x network plate (2-gang)

ALT A - NETWORK INFRASTRUCTURE & REMOTE SYSTEMS INTEGRATION

LINE	QTY	MODEL / PART #	MANUFACTURER / DESCRIPTION
66	1	M-SQ-SDANTE64-A	Allen & Heath DANTE card for SQ7
67	2	GS116PP	NetGear 16 port POE gigabit switch
68	7	WPX2B/4ECON - DX, NET, DT-P, DT-S	Whirlwind 4x network plate (2-gang)
69	1	WPX2B/4ECON - ORCH 1-4	Whirlwind 4x network plate (2-gang)
70	1	WPX2B/4ECON - CHORUS 5-8	Whirlwind 4x network plate (2-gang)
71	1	WPX2B/4ECON - BAND 9-12	Whirlwind 4x network plate (2-gang)

ALT B - WIRELESS THEATRICAL MICROPHONES

LINE	QTY	MODEL / PART #	MANUFACTURER / DESCRIPTION
72	3	EB1	Middle Atlantic blank panel
73	1	HP	MiddleAtlantic rack screws
74	2	PDLT-815RV-RN	Middle Atlantic 15amp power distro w/ lights
75	14	SLXD14D-H55	Shure 2x digital wireless beltpack system
76	28	SB903	Shure rechargeable battery pack
77	4	SBC80-903-US	Shure charging tray w/ power supply
78	5	UA844+SWB/LC	Shure antenna splitter
79	2	MX153B/O-TQG	Shure earset microphone
80	6	MX153C/O-TQG	Shure earset microphone
81	20	MX153T/O-TQG	Shure earset microphone
82	1	MT-32-F-M-15	Whirlwind audio snake cable

ALT C - WIRELESS INTERCOM + PORTABLE GEAR

LINE	QTY	MODEL / PART #	MANUFACTURER / DESCRIPTION
83	2	DX168	Allen & Heath I/O interface
84	1	DT168	Allen & Heath DANTE I/O interface
85	1	iPad 32GB WiFi only	Apple touchpad (remote control)
86	1	iPad COVER	Apple touchpad cover/case
87	1	CZ-DX410-4UP	ClearCom/HME wireless intercom system w/ base station, antennas, 4 beltacks, 5 headsets, 8 batteries & charger
88	1	FMR-720	Earthworks high definition podium microphone
89	1	FWR-730-3	Earthworks 3x high definition floor / choir microphone
90	2	GFW-MIC-0601	Gator/Frameworks desktop mic stand
91	4	GFW-MIC-1200	Gator/Frameworks tall mic stand
92	8	GFW-MIC-2020	Gator/Frameworks tall mic stand w/ boom
93	4	GFW-MIC-2621	Gator/Frameworks short mic stand w/ boom
94	1	GTSA-MIC15	Gator portable microphone & accessories case
95	1	GTSA-UTL203008	Gator portable cable case
96	1	BETA52	Shure kick drum microphone
97	4	BETA57A	Shure dynamic microphone
98	2	KSM137/SL	Shure small diaphragm condenser microphone
99	2	KSM32/CG	Shure large diaphragm condenser microphone
100	2	SM137/LC	Shure small diaphragm condenser microphone
101	4	SM58/LC	Shure handheld microphone
102	1	AC4000	Tplink tri-band router
103	6	TFX122M-AN	Turbosound active stage floor monitor
104	2	DIR	Whirlwind direct injection box
105	3	ENC-S025	Whirlwind portable shielded Ethercon cable
106	2	ENC-S030	Whirlwind portable shielded Ethercon cable
107	4	MKQ20NP-BRN	Whirlwind/Canare premium microphone cable
108	8	MKQ25NP-BLK	Whirlwind/Canare premium microphone cable
109	4	MKQ30NP-GRN	Whirlwind/Canare premium microphone cable
110	4	MKQ50NP-BLU	Whirlwind/Canare premium microphone cable
111	2	MST10US	Whirlwind portable audio cable (STMINI)
112	2	MST2R06US	Whirlwind portable audio cable (STMINI to dual RCA)
113	1	PodDI	Whirlwind direct injection box
114	2	SN18	Whirlwind portable instrument cable (TS)

PART 3 - EXECUTION

3.01 INSTALLATION

- A. Installation shall include delivery, unloading, setting in place, inter-connecting wiring of system components, equipment alignment, adjustments, programming, and all other work whether or not expressly required herein which is necessary to result in a complete, operational and optimum performing system.
- B. All installation practices shall be in accordance with, but not limited to, this specification. Installation shall be performed in accordance with the applicable standards, requirements, and recommendations of National, State, and Local authorities having jurisdiction.
- C. During installation, and up to the date of System Acceptance, the Electrical Contractor shall be under obligation to protect the Sound System Contractors finished and unfinished work against damage and loss. In the event of such damage or loss, the Electrical Contractor shall replace or repair such work at no cost to the Sound System Contractor.

3.02 SYSTEM ACCEPTANCE

- A. The Owner shall provide an authorized representative to officially accept the system after substantial completion of the installation and commissioning.
- B. A physical inventory will be taken of all equipment on site and will be compared to equipment lists in the contract documents.
- D. Proof of performance shall be demonstrated either with written verification of SPL and frequency response measurements plotted on a site map, or by demonstration in the presence of the Owner's representative. Only actual readings are accepted. Computer simulation models are not acceptable. All test documentation shall be submitted at close out along with all final "as built" drawings, manuals, and other required documentation. Additional system adjustments may be needed to improve intelligibility (i.e.: re-aiming of speakers and/or re-adjustment of gain, equalization, dynamic control and time alignment parameters within the digital signal processors). Such additional work shall not incur any additional cost to the Owner.
- E. Sound System Contractor shall provide copy of all DSP (digital signal processor) files to the Owner.
- F. The Sound System Contractor shall provide access to all devices for owner representative's on-site acceptance testing. Adjustments and/or corrections may be required at that time. Owner's representative may authorize system acceptance prior to actual training, turnover and close out to Owner.

3.03 TRAINING

- A. The Sound System Contractor will provide comprehensive training by a qualified audio engineer to instruct the Owner in the operation and maintenance of the system. Owner is advised to provide system operators with basic sound system knowledge to be present at time of training. There shall be a total of FOURTEEN hours allocated for training spread out over FOUR sessions as mutually agreed upon between the Owner and the Sound System Contractor. A Training Sign-Off sheet with signatures of all training attendees will be recorded and distributed as appropriate. The Owner may video record each training for their own internal record/reference. The four sessions may be presented as follows:
 - 1. Basic training of "simple-use" mode to any/all potential system users (i.e.: facilities, administration and teaching staff). Est. 2 hours.
 - 2. Introduction to "advanced" mode, primarily focused on digital mixing console configuration and operations. Est. 4 hours.
 - 3. Follow-up digital mixer operation. Est. 4 hours.

4. On-the-job (i.e.: theatrical tech rehearsal) digital mixer operation. Est. 4 hours.

PART 4 – INSURANCE REQUIREMENTS

- A. Notwithstanding any terms, conditions or provisions, in any other writing between the parties, the firm hereby agrees to effectuate the naming of the District as an Additional Insured on the firm's insurance policies, except for workers' compensation and N.Y. State Disability insurance.
- B. The policy naming the District as an Additional Insured shall:
- a. Be an insurance policy from an A.M. Best A- rated or better insurer, licensed to Conduct business in New York State. A New York licensed and admitted insurer is strongly preferred. The decision to accept non-licensed and non-admitted carriers lies exclusively with the District and may create additional vulnerability and costs for the District.
 - b. State that the organization's coverage shall be primary and non- contributory coverage for the District, its Board, employees and volunteers.
 - c. Additional insured status shall be provided by standard or other endorsements that extend coverage to the District (CG 20 26) or equivalent. The decision to accept an endorsement rest solely with the District. A completed copy of the endorsements must be attached to the Certificate of Insurance.
 - d. The certificate of insurance must describe the services provided by the firm that are covered by the liability policies.
 - e. At the District's request, the firm shall provide a copy of the declaration page of the liability and umbrella/excess policies with a list of endorsements and forms. If requested, the firm will provide a copy of the policy endorsements and forms
- C. The vendor agrees to indemnify the District for applicable deductibles and self- insured retentions.
- D. Minimum Required Insurance:
- a. **Commercial General Liability Insurance**
\$1,000,000 per occurrence/ \$2,000,000 aggregate.
The general aggregate shall apply on a per-project basis (where applicable).
 - b. **Automobile Liability**
\$1,000,000 combined single limit for owned, hired, borrowed and non- owned motor vehicles.
 - c. **Workers' Compensation and NYS Disability Insurance**
Statutory Workers' Compensation (C-105.2 or U-26.3); and NYS Disability Insurance (DB-120.1) for all employees. Proof of coverage must be on the approved specific form, as required by the New York State Workers' Compensation Board. ACORD certificates are not acceptable. A person seeking an exemption must file a CE-200 Form with the state. The form can be completed and submitted directly to the WC Board online.
 - d. **Umbrella/Excess Insurance**
\$ 2 million each Occurrence and Aggregate. Umbrella/Excess coverage shall be on a follow-form basis over the required General Liability and Professional Liability coverage.
- E. The firm acknowledges that failure to obtain such insurance on behalf of the District constitutes a

material breach of contract. The firm is to provide the district with a certificate of insurance, evidencing the above requirements have been met, prior to the commencement of work.

PART 5 – EARLY TERMINATION

- A. If the awarded bidder fails to perform in accordance with said agreement, the District reserves the right to cancel the agreement and purchase the balance of the services from other sources, with the awarded firm responsible to the District for any cost in excess of their proposed/awarded fee. Such notification will be provided to the firm via certified mail.

PART 6 – TIME REQUIREMENTS

- A. Proposal Calendar
The following is a list of key dates up to and including the date proposals are to be submitted:
- Request for bids issued **February 7, 2025**
 - Due date for bids **February 28, 2025**

PART 7 – PROPOSAL REQUIREMENTS

- A. Vendors wishing to submit bids must include the following:
1. Provide the names of current and former client references, with information on the number of years of service to each, along with the names and telephone numbers of contact persons (see attached Appendix A).
 2. A statement of the fees the firm intends to charge the District as outlined on the submittal Appendix B.
 3. Provide the name, address, and phone number of the individual(s) that will assume responsibility for these services (Appendix C).
 4. A signed Statement of Non-Collusion, Iran Divestment Act Certification, Sexual Harassment Certification, Hold Harmless Agreement and Non-Discrimination Statement (Appendices D, E, F, G and H).
 5. Provide a description of any regulatory action taken against the vendor within the last five years by a regulatory agency, such as the Internal Revenue Service or State Education Department.
 6. Identify any litigation brought against the vendor during the past five years. Explain any pending litigation that may have a financial impact on your company.
- B. Each vendor shall submit an original proposal to the following address:

John P. Fink
Assistant Superintendent for Business
Cornwall Central School District
24 Idlewild Avenue
Cornwall-On-Hudson, New York 12520

All bids must be received no later than **11:00 A.M.** on **February 28, 2025**, Eastern Standard Time (EST). Late bids will not be opened and will be returned to the sender.

PART 8 – EVALUATION PROCEDURES

- A. Bid evaluation criteria will include, but not be limited to:
1. Submittal is received on or before 11:00am on February 28, 2025.
 2. Completion of all appendices.

3. Demonstration of experience of the vendor, size and experience of staff, educational background, specialized skills, and expertise working with NYS school districts.
4. Cost will be a consideration, but will not be the primary factor in the selection.

The District reserves the right without prejudice to reject any or all bids submitted, to negotiate with any vendor submitting a bid, or to select a bid other than that of the firm offering the lowest price to the District.

During the evaluation process, the District reserves the right, where it may serve the District's best interest, to request additional information or clarifications from bidders, or to allow corrections of errors or omissions. At the discretion of the District, vendors submitting bids may be requested to make oral presentations as part of the evaluation process.

Submission of a bid indicates acceptance by the vendor of the conditions contained in this request for proposals unless clearly and specifically noted in the bid submitted.

APPENDIX A: CLIENT REFERENCE LIST

School District / Company Name

Years of Service

Contact Person

APPENDIX B: SCHEDULE OF FEES :

Sound Contractor:

Base:	
Alt-A:	
Alt-B:	
Alt-C:	

Electrical Contractor:

Base:	
Alt-A:	
Alt-B:	
Alt-C:	

NOTE:

Wages paid under this agreement must comply with any applicable NYS Department of Labor Prevailing Wage regulations.

Annual increases at the lesser of 2% or CPI (based May to May CPI index)

APPENDIX C: FIRM CONTACT

The following individual(s) is responsible for this proposal and any services awarded.

Company: _____

Address: _____

Phone: _____

Email: _____

Authorized Signature: _____

Printed Name: _____

Title: _____

Date: _____

APPENDIX D: BID PROPOSAL and NON-COLLUSIVE BIDDING CERTIFICATIONS

Firm Name: _____

Business Address _____

Telephone Number _____ Date of Bid/Proposal _____

I. General Bid Certification

The bidder certifies that s/he will furnish, at the prices herein quoted, the materials, equipment and/or services as proposed on this bid.

II. Non-Collusive Bidding Certification

By submission of this bid proposal, the bidder certifies that s/he is complying with Section 103-d of the General Municipal Law as follows:

Every bid or proposal hereafter made to a political subdivision of the state or any public department, agency or official thereof where competitive bidding is required by statute, rule regulation or local law, for work or services performed or to be performed or goods sold or to be sold, shall contain the following statement subscribed by the bidder and affirmed by such bidder as true under the penalties of perjury;

(a) By submission of this bid, each bidder and each person signing on behalf of any bidder certifies, and in the case of a joint bid each party thereto certifies as to its own organization, under penalty of perjury, that to the best of his/her knowledge and belief:

- (1) The prices in this bid have been arrived at independently without collusion, consultation, communication or agreement, for the purpose of restricting competition, as to any matter relating to such prices with any other bidder or with any competitor;
- (2) Unless otherwise required by law, the prices which have been quoted in this bid have not been knowingly disclosed by the bidder and will not knowingly be disclosed by the bidder prior to opening, directly or indirectly, to any other bidder or to any competitor; and
- (3) No attempt has been made or will be made by the bidder to induce any other person, partnership or corporation to submit or not to submit a bid for the purpose of restricting competition.

(b) A bid shall not be considered for award nor shall any award be made where (a) (1), (2) and (b) above have not been complied with; provided, however, that if in any case the bidder cannot make the foregoing certification, the bidder shall so state and shall furnish with the bid a signed statement which sets forth in detail the reasons therefore. Where (a) (1), (2) and (3) above have not been complied with, the bid shall not be considered for award nor shall any award be made unless the head of the purchasing unit of the political subdivision, public department, agency or official thereof to which the bid is made, or his designee, determines that such disclosure was not made for the purpose of restricting competition.

Any bid hereafter made to any political subdivision of the state or any public department, agency or official thereof by a corporate bidder for work or services performed or to be performed or goods sold or to be sold, where competitive bidding is required by statute, rule, regulation, or local law, and where such bid contains the certification referred to in subdivision one of the section, shall be deemed to have been authorized by the board of directors of the bidder, and such authorization shall be deemed to include the signing and submission of the bid and the inclusion therein of the certificate as to non-collusion as the act and deed of the corporation or partnership.

Signature (Authorized) _____

Title _____

APPENDIX E: IRAN DIVESTMENT ACT CERTIFICATION

The Iran Divestment Act of 2012 (“Act”), Chapter 1 of the 2012 Laws of New York, added State Finance Law (SFL), §165-a and General Municipal Law §103-g, effective April 12, 2012. Under the Act, the Commissioner of the New York State Office of General Services (“OGS”) developed a list (“Prohibited Entities List”) of “persons” who are engaged in “investment activities in Iran” (both are defined terms in the law). In accordance with SFL §165-a(3), the Prohibited Entities List may be found at the OGS website: <http://www.ogs.ny.gov/about/regs/docs/ListofEntities.pdf>

Pursuant to General Municipal Law §103-g, by signing below, Bidder certifies as true under the penalties of perjury that: By submission of this proposal each Bidder and each person signing on behalf of any Bidder certifies, and in the case of a joint proposal each party thereto certifies as to its own organization, under penalty of perjury, that to the best of its knowledge and belief that each Bidder is not on the list created pursuant to paragraph (b) of subdivision 3 of section 165-a of the State Finance Law.

A proposal shall not be considered for award nor shall any award be made where the certification has not been made, provided, however, that if in any case the Bidder cannot make the certification, the Bidder shall so state and shall furnish with the proposal a signed statement which sets forth in detail the reasons therefor. The Cornwall Central School District (“District”) may award a contract to a Bidder who cannot make the required certification on a case-by-case basis if:

- 1) The investment activities in Iran were made before April 12, 2012, the investment activities in Iran have not been expanded or renewed after April 12, 2012, and the person has adopted, publicized, and is implementing a formal plan to cease the investment activities in Iran and to refrain from engaging in any new investments in Iran: or
- 2) The District makes a determination that the goods and services are necessary for the District to perform its functions and that, absent such exemption, the political subdivision would be unable to obtain the goods or services for which the contract is offered. Such determination shall be made in writing and shall be a public document.

During the term of the Contract, should the District receive information that a person is in violation of the above-referenced certifications, the District will offer the person an opportunity to respond. If the person fails to demonstrate that it has ceased its engagement in the investment which is in violation of the Act within 90 days after the determination of such violation, then the District shall take such action as may be appropriate including, but not limited to, imposing sanctions, seeking compliance, recovering damages, or declaring the contractor in default.

The District reserves the right to reject any bid, proposal, contract or request for assignment for an entity that appears on the Prohibited Entities List prior to the award or execution of a contract or any renewal thereof, as applicable, and to pursue a responsibility review with respect to any entity that is awarded a contract and appears on the Prohibited Entities List after contract award.

_____ DATE	_____ SIGNATURE
_____ BUSINESS NAME	_____ PRINTED NAME
	_____ TITLE

APPENDIX F
SEXUAL HARASSMENT CERTIFICATION

In accordance with State Finance Law §138-l, which generally prohibits the School District from entering into contracts pursuant to the Bid/RFP process with persons who fail to submit a certification affirming compliance with New York State Labor Law §201-g, the Proposer submits the following certification under the penalty of perjury:

By submission of this proposal, each Proposer and each person signing on behalf of any Proposer, certifies, and in the case of a joint bid/proposal each party thereto certifies as to its own organization, under penalty of perjury, that the Proposer has implemented written policy addressing sexual harassment prevention in the workplace and provides annual sexual harassment training to all of its employees. Such policy shall, at a minimum, meet the requirements of Section 201-g of the NYS Labor Law.

Firm's Name

Name (Please Print)

Signature (Authorized)

Date

_____, New York
County Of

Sworn to before me this _____ day of _____, 20 _____

Notary Public Signature

Please Print Name

Commission Expiration Date

APPENDIX G
HOLD HARMLESS AGREEMENT

The undersigned hereby agrees to defend, indemnify, and save harmless the Cornwall Central School District from and against any and all liability, loss, damages, claims for bodily injury and/or property damages, cost and expense, including counsel fees, to the extent permissible by law, that may occur or that may be alleged to have occurred in the course of the performance of this agreement by the contractor, whether such claims shall be made by an employee of the Contractor or by a third party. The Contractor covenants and agrees that he will pay all costs and expenses arising therefrom and in connection therewith, and if any judgment shall be rendered against the Owner, in any such litigation, the Contractor shall at this own expense satisfy and discharge the same.

Representative (Please Print Name): _____

Title: _____

Signature (Authorized): _____

Firm Name: _____

Date: _____

APPENDIX H
NON-DISCRIMINATION STATEMENT AND
AFFIRMATIVE ACTION BID PROVISIONS

It is the policy of the Cornwall Central School District to comply with all Federal, State, and local law, policy, orders, rules, and regulations which prohibit unlawful discrimination because of race, creed, color, national origin, sex, sexual orientation, age, disability, or marital status, and to take affirmative action in working with Contracting Parties.

Each Bidder/Proposer must represent and warrant that, if successful in obtaining an Engagement, it shall (i) comply with the provisions of this section relating to Non-Discrimination and Affirmative Action and (ii) require its employees to comply with any and all Federal, State and local law, policy, orders, rules and regulations which prohibit unlawful discrimination in employment or hiring because of the race, creed, color, national origin, sex, sexual orientation, age, disability or marital status of any individual.

The Bidder/Proposer will not unlawfully discriminate against employees or applicants for employment because of race, creed, color, national origin, sex, sexual orientation, age, disability, or marital status.

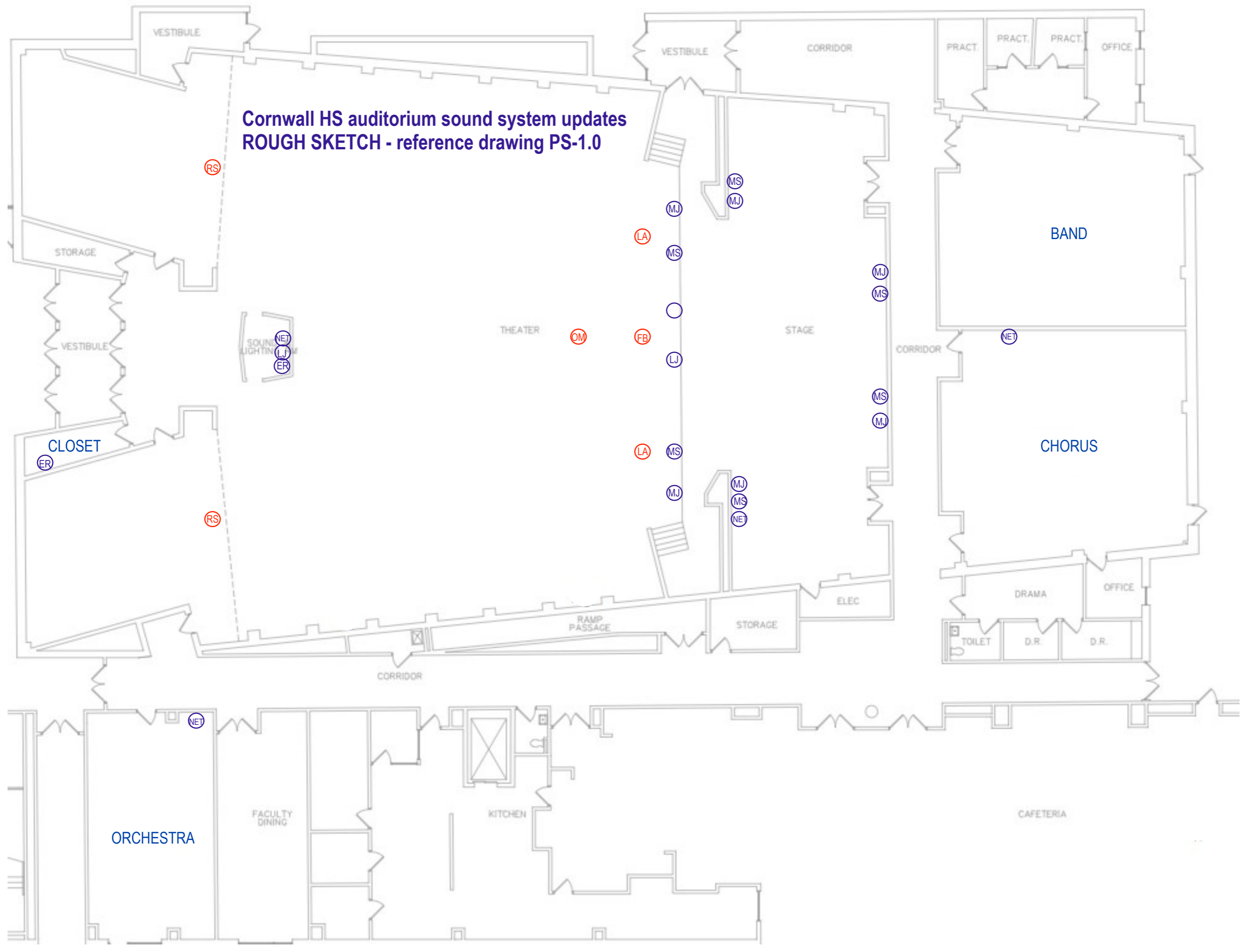
Name (Please Print): _____

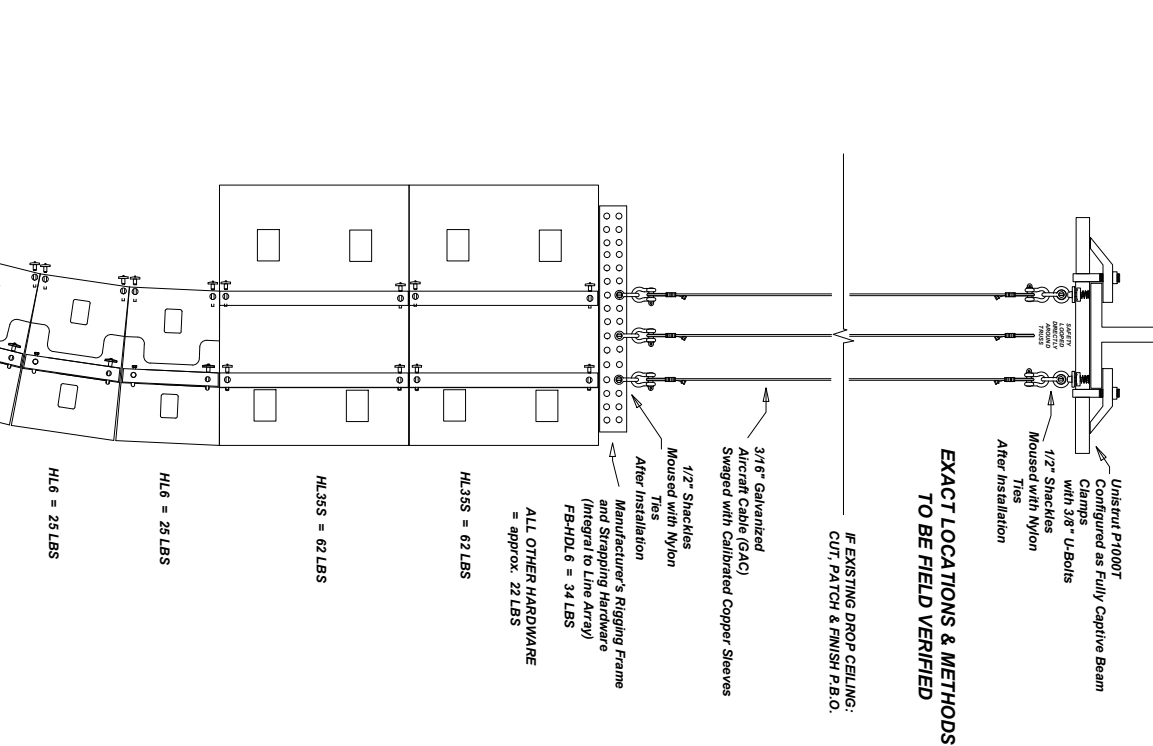
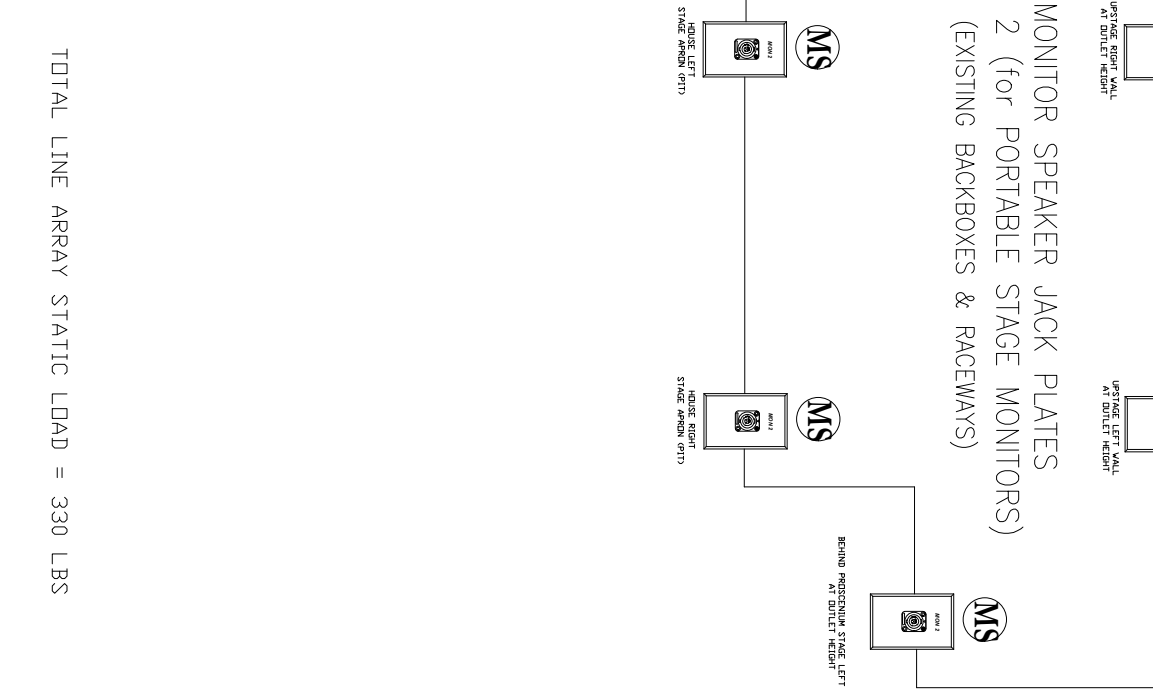
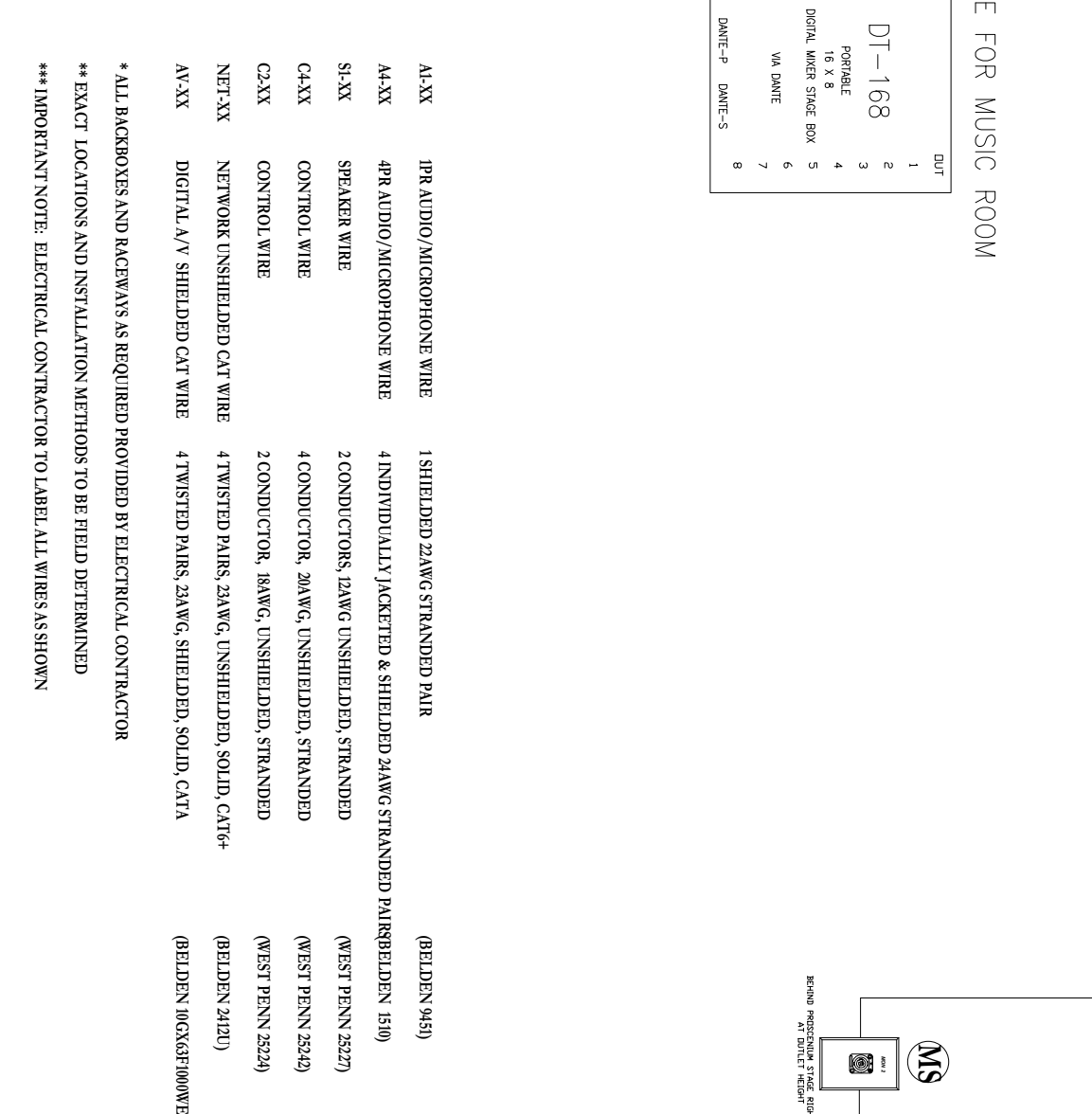
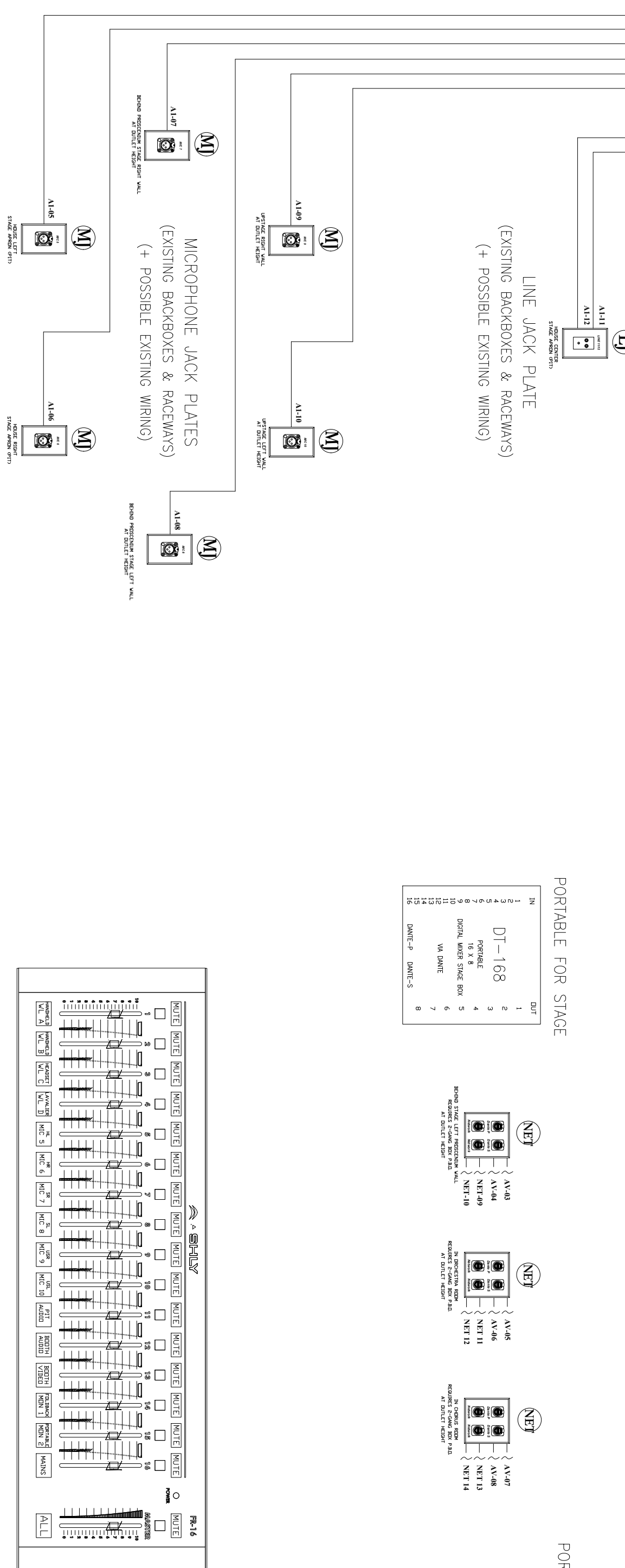
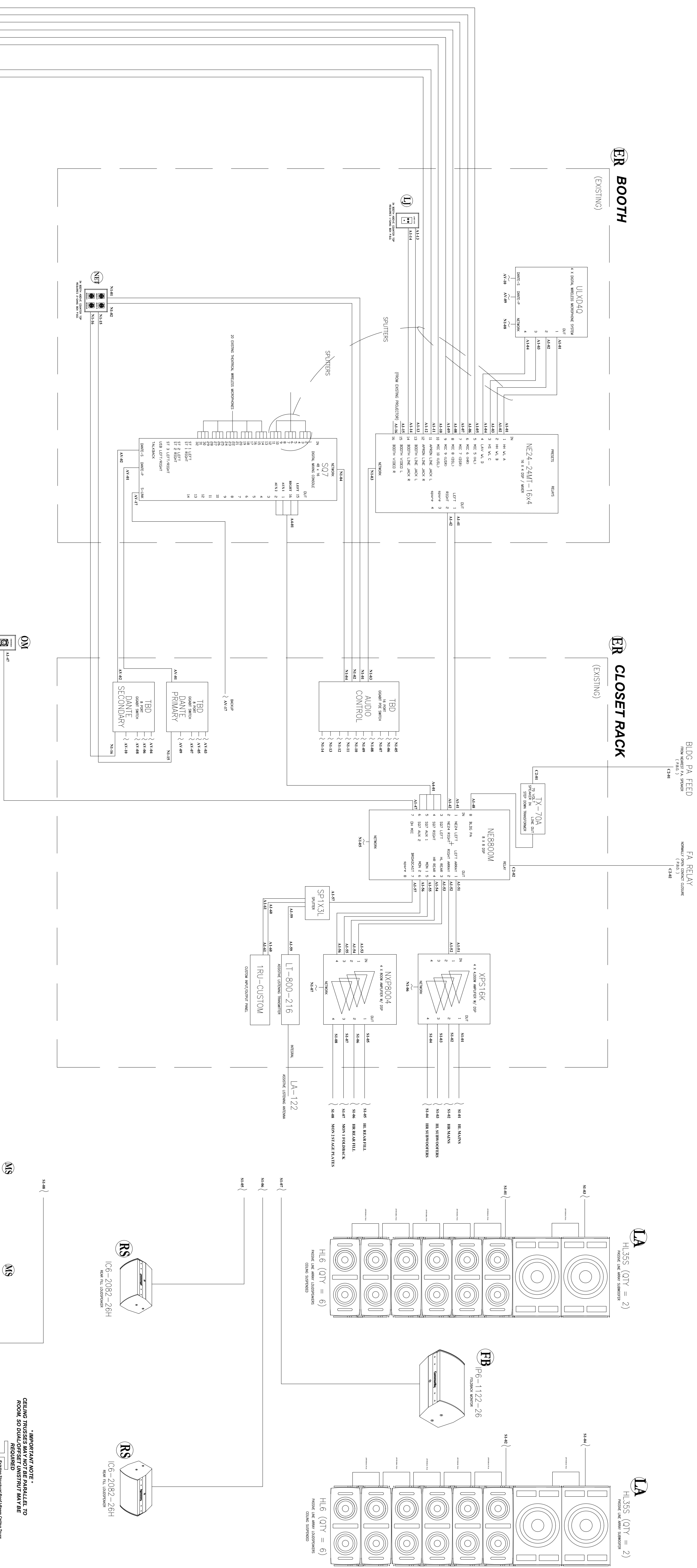
Title: _____

Signature (Authorized): _____

Date: _____

**Cornwall HS auditorium sound system updates
ROUGH SKETCH - reference drawing PS-1.0**





1 FUNCTIONAL BLOCK DIAGRAM

3 REMOTE FADER CONTROLS

6 POWER NOTES

7 LINE ARRAY RIGGING NOTES

AXX	4PR AUDIO/MICROPHONE WIRE	ISHEATHED CABLE STRANDED PAIR	(BELDEN 9410)
AXX	4PR AUDIO/MICROPHONE WIRE	INDIVIDUALLY JACKETED & SHIELDED SAWS/STRAINED PAIR	(BELDEN 9410)
CAX	CONTROL WIRE	CONDUCTOR SAWS/SHIELDED STRANDED	(BEST PRACTICE)
CAX	CONTROL WIRE	CONDUCTOR SAWS/SHIELDED STRANDED	(BEST PRACTICE)
SAXX	NETWORK/SHIELDED CAT WIRE	Twisted Pair, SAWS, SHIELDED SOLID CAT*	(BEST PRACTICE)
AXX	DIGITAL TV SHIELDED CAT WIRE	Twisted Pair, SAWS, SHIELDED SOLID CAT*	(BELDEN SHIELD)

* ALL WORKS AND PACKS ARE REQUIRED PROVIDED BY ELECTRICAL CONTRACTOR
 ** EXACT LOCATIONS AND INSTALLATION METHODS TO BE FIELD DETERMINED
 *** IMPORTANT NOTE: ELECTRICAL CONDUIT TO LABEL ALL WIRE AS SHOWN

COMPLEMENTARY MARKING LOAD LIMITS
 BASED ON 5:1 SAFETY RATIO

P1001 UNISTRUT	= 1,530 LBS
P2786 UNISTRUT CLAMPS	= 500 LBS
3/8" FORGED EYEBOLTS	= 600 LBS
1/2" FORGED SHACKLES	= 1,200 LBS
3/16" GALVANIZED AIRCRAFT CABLE (GAC)	= 840 LBS
INTEGRAL RCF RIGGING HARDWARE	= 500 LBS

TOTAL LINE ARRAY STATIC LOAD = 390 LBS

REV	DATE	DESCRIPTION
1	01.15.25	DESIGN

PRO SOUND ASSOCIATES, LLC
 P.O. BOX 336
 GUILDERLAND, NY 12084
 PHONE 888.715.1176
 WWW.PROSOUNDASSOCIATES.COM

CORNWALL CSD CSD
High School Auditorium
Audio System Updates

DESIGNED BY: **PSA**
 DRAWN BY: **DC**
 APPROVED BY: **DC** 01-15-25
 ACCEPTED BY:

PS-1.0
 DESIGN
 DRAWING